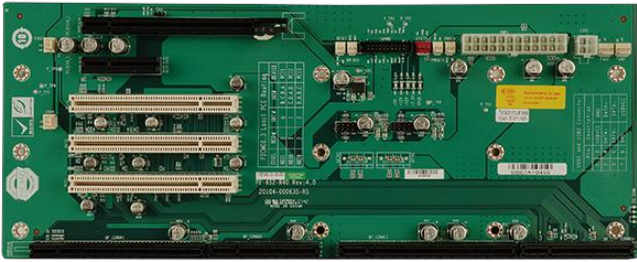


PE-6S2

6-slot backplane with one PCIe x16 slot, one PCIe x4 slot and three PCI slots



Features

- » 4 x Internal USB 2.0
- » 1 x PCIe x16
- » 1 x PCIe x4
- » 3 x PCI Slot

Specifications

I/O Interface	
I/O Interface	4 x Internal USB 2.0
Expansion	1 x PCIe x16
	1 x PCIe x4
	3 x PCI Slot
Power	
Power Supply	24+4 pin ATX

Ordering Information

PE-6S2-R40	PICMG 1.3 ,6 Slots Backplane with 1PCIe x16 and 1PCIe x4 and 3PCI Slots,RoHS
PAC-106GW-R21	6-Slot Full size Chassis,White,W/O PSU,RoHS
PAC-1000GB-R20	6-Slot Full size Chassis,Black,W/O PSU,RoHS