

## TKR-103-TOUCH-ADH-USB



### PRODUCT FEATURES

- Completely sealed glass surface
- Can be washed and disinfected, so complies with high hygiene standards
- Integrated key lock function
- Complete key layout with integrated touch-pad
- Key sound volume and sensitivity can be set individually
- IP65 protection rating (front)
- Numerous individualisation possibilities
- Version without base protection plate, the version with base protection plate (ADHC) is available on request

### TECHNICAL DATA

Number of keys:	103
Mounting type:	Panel mount keyboard attached with glue (ADH)
Front panel material:	hardened glass
Surface:	3 mm (± 0.5 mm) glass
Key switch technology:	capacitive keys
Protection rating:	IP65 (front)
Impact protection rate:	IK06
Interface:	USB
USB compatibility:	compliant with USB 2.0

Operating temperature:	0 °C to 60 °C
Storage temperature:	-40 °C to 65 °C
Dimensions:	482 x 179 x 22.8 mm
Operating systems:	Windows®, MacOSX®, Linux® *
Certifications:	RohS, REACH

### TECHNICAL DATA TOUCHPAD

Operating principle:	Capacitive
Dimensions:	60 x 42 mm

### Information for ordering:

Cat.Nr.	Product description	Layout
KR23220	TKR-103-TOUCH-ADH-USB-DE	German
KR23221	TKR-103-TOUCH-ADH-USB-US/EU	US /EU

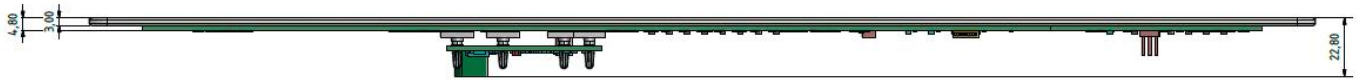
Other layouts, configurations and interfaces available on request.

\* If OS and Hardware meet the requirements of USB2.0 compliance.

Subject to modifications and errors!

## TECHNICAL DRAWINGS (in mm):

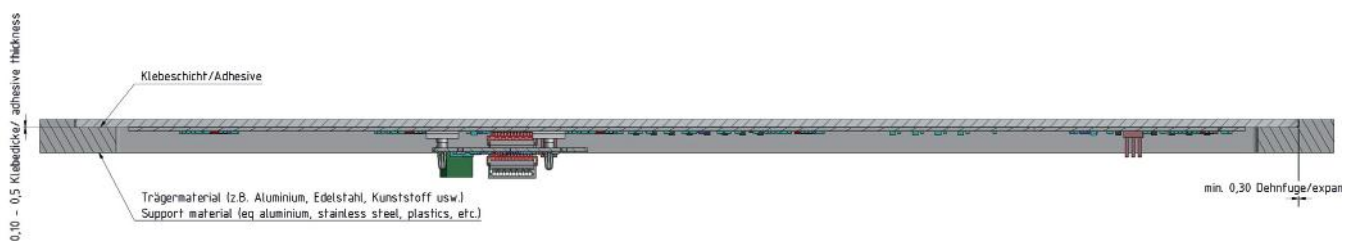
### Long side (without protection plate)



### Top view

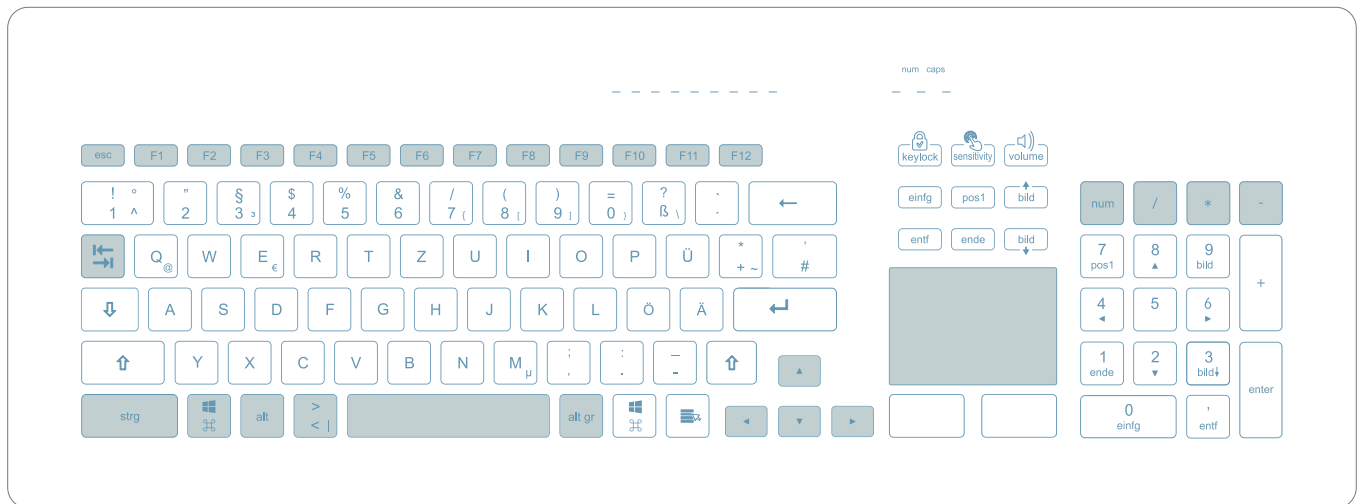


### Cross section when inserting (without protection plate)



Subject to modifications and errors!

## KEY FUNCTIONS:



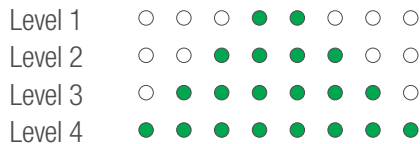
Key lock

Sensitivity setting: 4 levels

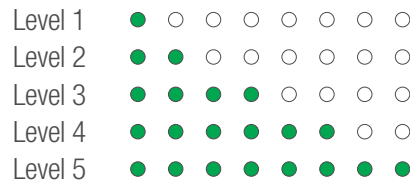
Volume setting: 5 levels

--- LED bar to indicate key lock function and the settings for sensitivity and volume

The sensitivity can be set as follows (ascending):



The volume can be set as follows (ascending):



## KEYLOCK-FUNCTION

Press the key for approx. 2 seconds. This will cause the LED bar to flash; when it is permanently green, the keys are locked. To unlock the system, press the key for 2 seconds again and wait until the LED bar goes off. The keys are then ready for use again.

## CLEANING

You can clean the glass surface with normal cleaning and disinfecting agents. The chemical resistance of the glass surface may vary depending on the concentration of the solution and the particular environmental conditions. We therefore recommend that you carefully check your cleaning and disinfecting agents to see how they affect glass surfaces.

Subject to modifications and errors!

## IMPORTANT USER INFORMATION

- ! You may only operate the device without its base protection plate if the keyboard is supported on the edge and the electronics do not touch any other objects.
- ! The electronic components on the rear side of the keyboard must not be touched under any circumstances.
- ! The device (USB interface) must be separated from the computer during the insertion procedure.
- ! Wait at least 5 seconds so that the unit can be calibrated after it has been connected to a computer.

## RECOMMENDED ADHESIVES FOR INSERTION

Gluing on the non-printed glass side (insertion from rear)

Supporting material	3M Scotch Weld DP8805NS (liquid) max. load-bearing capacity * (N)	3M 5952VHB (sticking tape) max. load-bearing capacity * (N)	3M 4932VHB (sticking tape) load-bearing capacity * (N)
Wood	130	25	38
Aluminium	450	25	62
Powder-coated metal	43	40	28
Corian	270	26	35
Anodised aluminium	450	30	45
Stainless steel	450	35	71

\* Compression force against the direction of insertion; tests conducted in ideal insertion conditions.

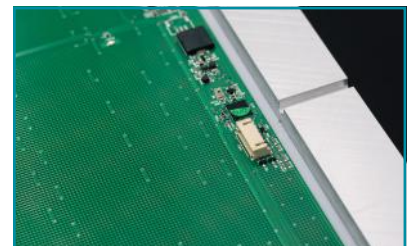
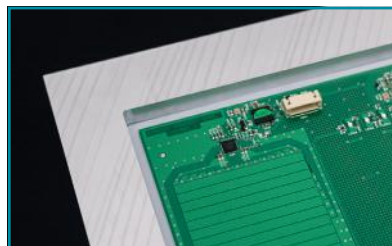
Gluing on the printed glass side (insertion from front)

Supporting material	3M Scotch Weld DP8805NS (liquid) max. load-bearing capacity* (N)	3M 5952VHB (sticking tape) load-bearing capacity * (N)	3M 4932VHB (sticking tape) load-bearing capacity * (N)
Wood	90	19,3	39,1
Aluminium	450	37,2	53,1
Powder-coated metal	55	33,9	22,1
Corian	250	28,5	37,1
Anodised aluminium	450	34,5	57,6
Stainless steel	450	45,5	60,6

\* Compression force against the direction of insertion; tests conducted in ideal insertion conditions.

## INSTALLATION DETAILS

- An expansion joint of at least 0.3 mm must be provided right round the glass
- Silicone, acrylic or joint tape must be used as the seal for the joint
- A gap of at least 5 mm must be provided between the circuit board and metal parts, right round the unit and at the rear
- We recommend additional tension relief for the cable

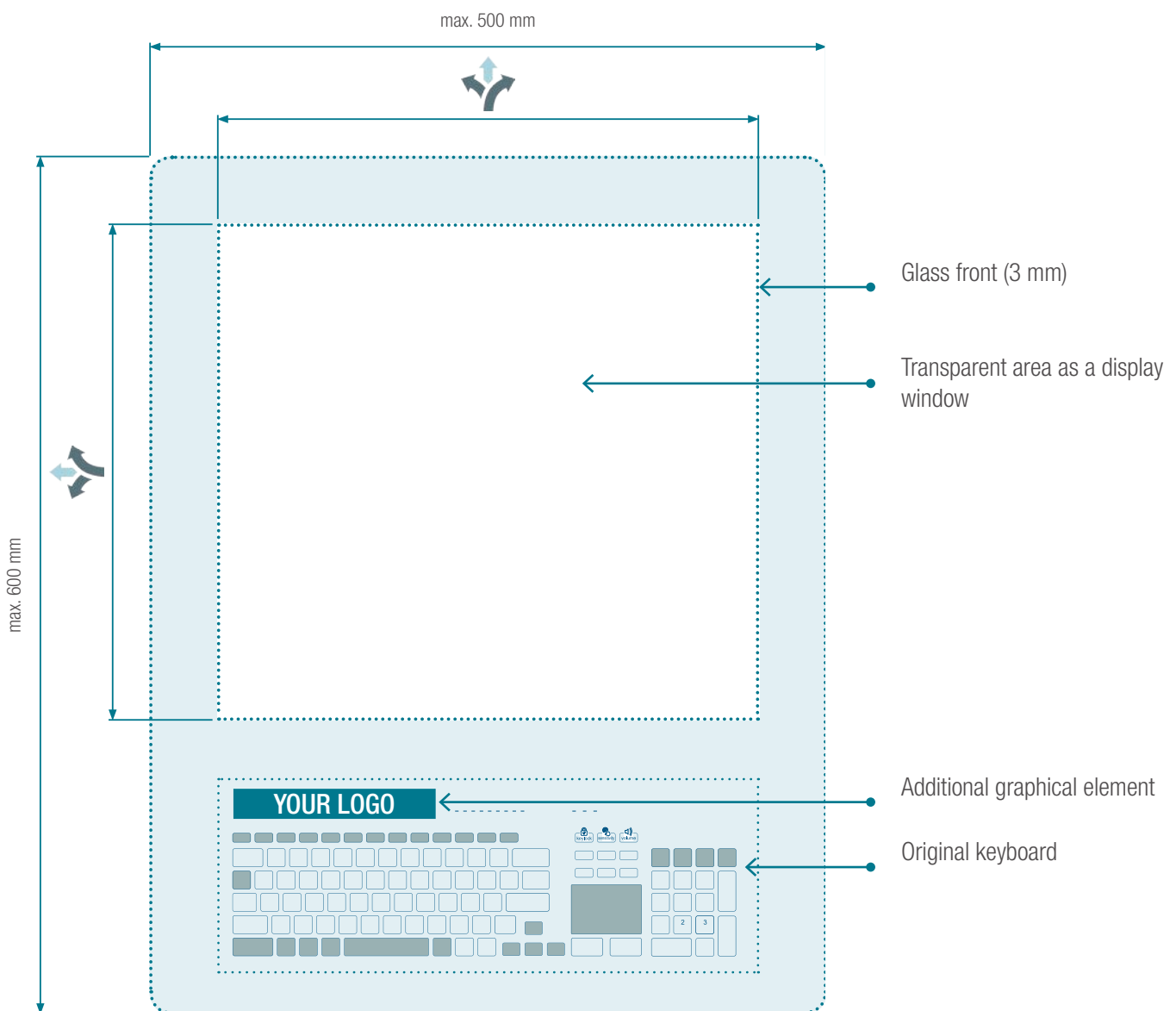


Subject to modifications and errors!

## INDIVIDUAL MODIFICATIONS

- Different front glass size
  - maximum width/length 500 x 600 mm
- Add your company's logo (1 to 4 colours)
- New country layout
- New graphic design
- Cable shortening
- Re-programming of keytable (HID standard)

## CUSTOMISED OPTIONS



Subject to modifications and errors!