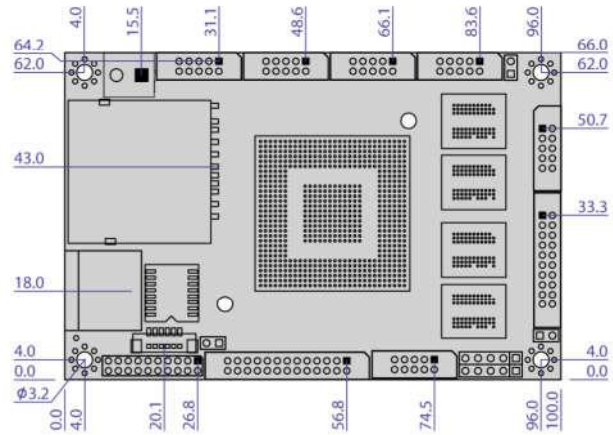
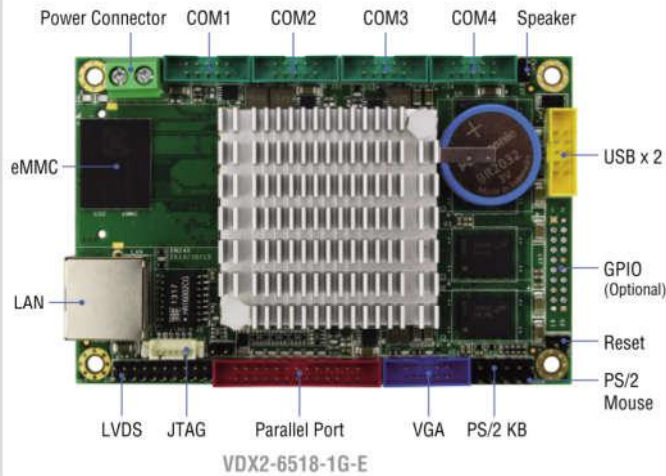


# VDX2-6518

1GB/4S/2USB/VGA/LVDS/LAN/  
eMMC(or SD Card Slot)/PWM



## Specifications

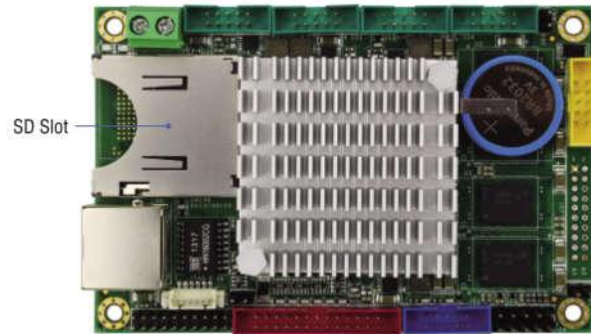
<b>Processor</b>	DM&P SoC CPU Vortex86DX2- 800MHz Real Time Clock with Lithium Battery Backup
<b>Cache</b>	L1:16K I-Cache, 16K D-Cache, L2 Cache 256KB
<b>BIOS</b>	AMI BIOS
<b>System Memory</b>	1GB DDR2 Onboard
<b>Watchdog Timer</b>	Software programmable from 30.5 $\mu$ sec.to 512 sec. x 2 sets
<b>O&amp;I Sets</b>	( Watchdog 1 fully compatible with M6117D)
<b>VGA</b>	Integrated 2D VGA chip VGA and TFT/LVDS Flat Panel Interface Support (Either VGA or LCD) Share system memory 16MB/32MB, Mono, DSTN, STN, TFT Flat Panel interface support & resolution up to 1280x1024, 16M colors
<b>LAN</b>	Integrated 10/100Mbps Ethernet x1
<b>Flash Disk Support</b>	Onboard 4MB SPI Flash Disk Onboard eMMC 8GB (Optional) SD card slot (Optional)
<b>I/O Interface</b>	RS-232 port x3 RS-232/422/485 port x1 USB port (Ver2.0) x2 Parallel port x1 8-bit GPIO port x1 (Optional) 10/100Mbps Ethernet port x1
<b>Connectors</b>	2.0mm 26-pin box header for Printer x1 2.0mm 20-pin box header for 16-bit GPIO x1 (Optional) 2.0mm 10-pin box header for USB x1 2.0mm 10-pin box header for RS-232 x4 2.0mm 2-pin header for Reset x1 2.0mm 16-pin header for LVDS x1 2.00 mm 10-pin box header for VGA x1 2.54 mm 5-pin box header for Keyboard x1 2.54 mm 5-pin header for Mouse x1 1.25 mm 6-pin wafer for JTAG x1 External RJ-45 connector for Ethernet x1
<b>Power Requirement</b>	Single Voltage +5V@720mA
<b>Weight</b>	63g
<b>Dimensions</b>	100mm x 66mm (3.94 x 2.6 inches)
<b>Operating Temperature</b>	-10°C ~ +60°C
<b>Operating System Support</b>	DOS, WinCE 6.0, WinCE 7.0, Linux, Windows 7, Windows Embedded Standard (XPE)

## Packing List

- VDX2-6518 x1
- Cable  
RS-232 (2.0) x4  
GPIO (2.0) x1 (Optional)  
USB (2.0) x1  
VGA (2.0) x1  
PRINT (2.0) x1  
PS/2 Mouse cable x1  
PS/2 Keyboard cable x1

## Ordering information

- **VDX2-6518-1G-E** Vortex86DX2 Tiny CPU Module with 1GB DDR2 & eMMC
- **VDX2-6518-1G-S** Vortex86DX2 Tiny CPU Module with 1GB DDR2 & SD



VDX2-6518-1G-S