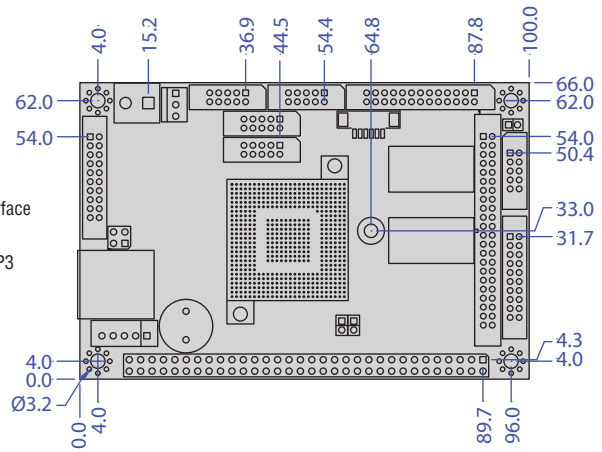
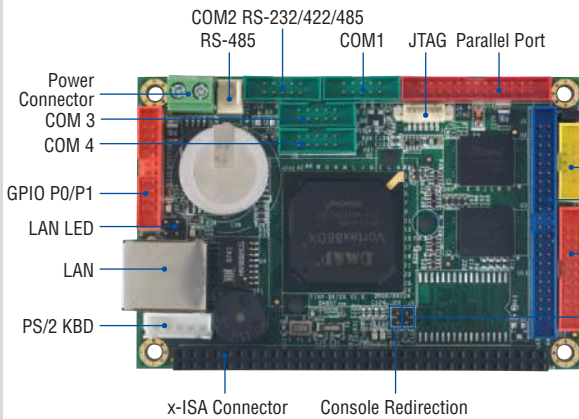


# VDX-6315RD

256MB/4S/2USB/LAN/2GPIO/PWMx24



Unit: mm

## Specifications

<b>SoC</b>	DM&P SoC CPU Vortex86DX- 800MHz Real Time Clock with Lithium Battery Backup
<b>Cache</b>	L1:16K I-Cache, 16K D-Cache L2 Cache 128KB
<b>Bus</b>	16-bit x-ISA interface
<b>BIOS</b>	AMI BIOS
<b>System Memory</b>	256/512MB DDR2 Onboard
<b>Watchdog Timer</b>	Software programmable from 30.5µ sec.to 512 sec. x 2 sets (Watchdog 1 fully compatible with M6117D)
<b>LAN</b>	Integrated 10/100Mbps Ethernet
<b>Flash Disk Support</b>	Onboard 4MB SPI Flash Disk MSTI EmbedDisk Module (16MB and above) 44-pin IDE to Micro SD (Optional)
<b>PWM</b>	24~32 Channels
<b>SRAM support</b>	512KB (Optional)
<b>I/O Interface</b>	Enhanced IDE port (UltraDMA-100/66/33) x1 RS-232 port x3 RS-232/422/485 port x1 USB port (Ver2.0) x2 Parallel port x1 16-bit GPIO port x2 10/100Mbps Ethernet port x1
<b>Connectors</b>	2.0mm 44-pin box header for IDE x1 2.0mm 26-pin box header for Printer x1 2.0mm 20-pin box header for 16-bit GPIO x2 2.0mm 10-pin box header for USB x1 2.0mm 10-pin box header for RS-232 x4 2.0mm 8-pin header for Ethernet x1 (Optional) 2.0mm 2-pin header for Reset x1 2.0mm 2-pin header for Console redirection x1 2.54mm 5-pin box header for Keyboard x1 2.54mm 3-pin header for RS-485 x1 2.54mm 2-pin header for LINK LED x1 2.54mm 2-pin header for TX/RX LED x1 1.25mm 6-pin wafer for JTAG x1 External RJ-45 connector for Ethernet x1
<b>Power Requirement</b>	Single Voltage +5V @ 400mA

<b>Weight</b>	63g
<b>Board Size</b>	100 x 66mm (3.94 x 2.6 inches)
<b>Operating Temperature</b>	-20 °C ~ +70 °C -40 °C ~ +85 °C (Optional)

## Packing List

- VDX-6315RD x1
- CD for User's Manual & Driver x1
- Cable
  - HDD 44P (2.0) x1
  - PRINT (2.0) x1
  - RS-232 (2.0) x4
  - USB (2.0) x1
  - GPIO (2.0) x2
  - PS2 KB White x1

## Ordering information

- **VDX-6315RD** Vortex86DX Tiny CPU Module with 256MB DDR2
- **VDX-6315RD-512** Vortex86DX Tiny CPU Module with 512MB DDR2
- **ICOP-2720** Tiny VGA/LCD Development Kit

- 1 µProcessor Module
- 2 Tiny Module
- 3 PC/104 CPU module
- 4 Half-Size CPU module
- 5 3.5" CPU module
- 6 Peripheral Module
- 7 Display Product Series
- 8 Accessories & Technical Information