



SSD1393-A

13.9" Resizing LCD, Brightness 600nits, LED backlight, 1280x398 ultra wide aspect ratio 16:5

SSD1393-A is an innovative ultra-wide, LED backlight LCD display. It provides LCD panel with specific ratios for digital signage, public transportation, exhibition hall, department store, vending machine and industrial applications.

Key Features

- Resizing LCD
- Ultra Wide Screen (16 : 5)
- LED Backlight
- Brightness 600nits
- Low Power Consumption
- High Uniformity



Specifications

V1

Model No.	SSD1393-A
Description	13.9" Resizing LCD Module, 600nits, LED backlight, 1280x398
Display Area	337.92x105.14 mm
Brightness	600nits
Resolution	1280 x 398
Aspect Ratio	16 : 5
Contrast Ratio	700:1
Pixel Pitch (mm)	0.264 x 0.264
Viewing Angle	170°(H), 160°(V)
Display Colors	16.7M
Response Time (Typical)	30 ms
Power Consumption	21W
Dimensions (mm)	360.9x132.5x48.6
Weight (Net)	1.5kg
LED Driving Board	On module
Control Board (Optional)	<input type="checkbox"/> AD6038GD
<input type="checkbox"/> AD2662GD	VGA+DVI
F / R Control Button	<input type="checkbox"/> 4 Key
<input type="checkbox"/> 4 Key	Power Switch, Menu, Select (+,-),
OSD Menu	Brightness, Contrast, H/V Position, Color, Phase, Clock...
Optional	<input type="checkbox"/> AOT <input type="checkbox"/> Touch Screen

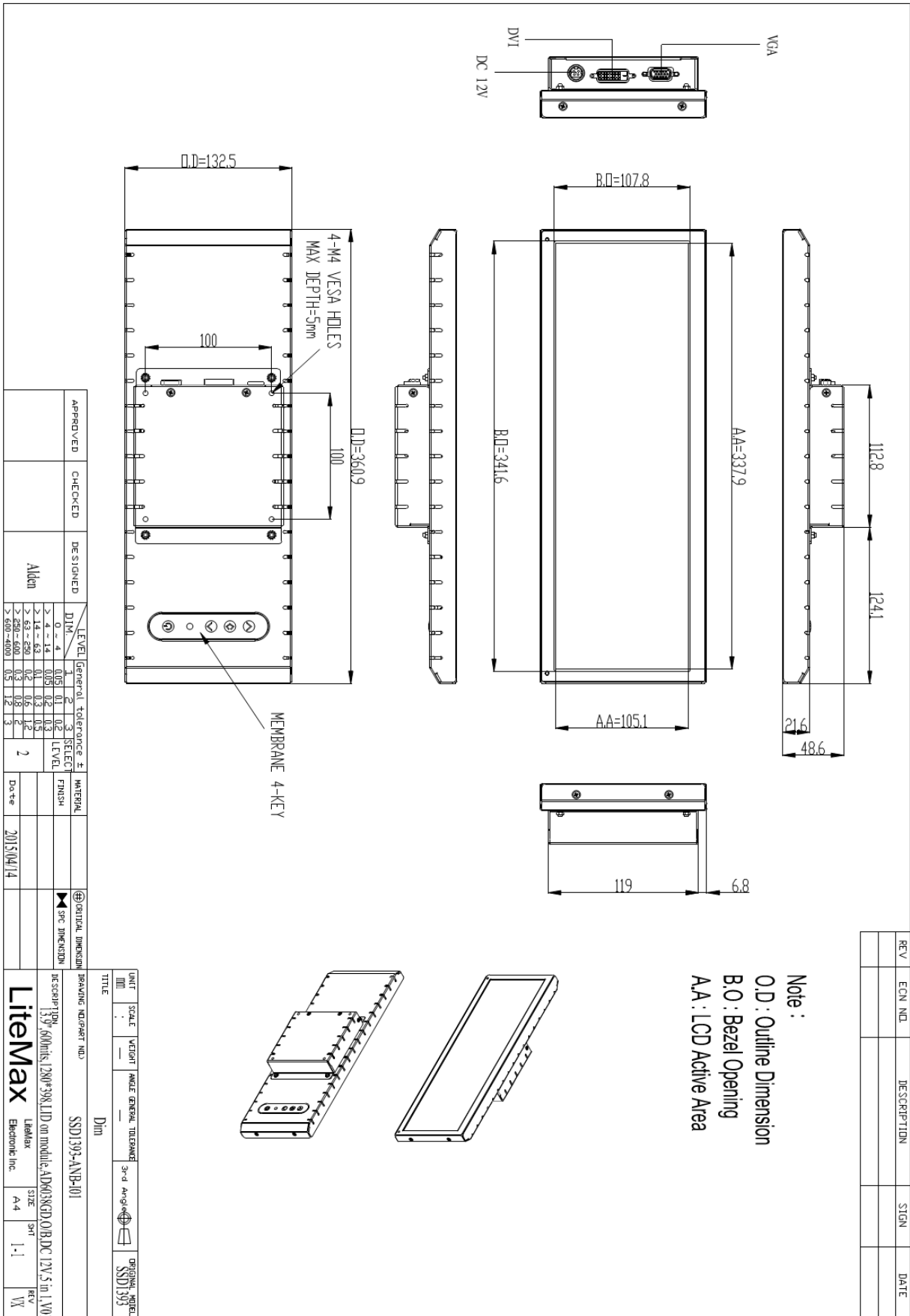
Specifications are subject to change without notice.

All brands or product names are trademarks or registered trademarks of their respective companies.

SSD= Panel+ LED Driving Board + AD Board



Mechanical Drawing





Ordering Information

Part Number	Description
SSD1393-ANB-I01	13.9",600nits,1280*398,LID on module,AD6038GD,O/B,DC12V,5in1,V01

Optional Accessories

Part Number	Description
840612051210	ADAPTER,AC/DC,12V/5.4A,65W,Atech OEM A065112-TDx.4P SLIDING CAP,P
810618301010	CABLE.POWER.AC.1830mm USA type
810618301090	CABLE,POWER,AC,1830mm Europe type
810618301050	CABLE.POWER.AC.1830mm UK type
810618301170	CABLE.POWER,AC,1830mm Australia type
810618301030	CABLE.POWER.AC.1830mm Japan type