



SLD1975

19" LCD Display, LED Backlight 1000nits,SXGA(1280x1024)

19" TFT LCD Display, built-in 1000 nits high bright for sunlight readable LCD display, high transmittance color filter, high transmission polarizing plates, Low Power Consumption, suitable for kiosk, advertising, POS, marine, transportation, gaming, studio display, gas pump.

Key Features

- Sunlight Readable
- LED Backlight
- SXGA(1280x1024) High Definition
- High Shock & Vibration Resistance
- Smart Panel design. The thickness is only 36mm
- High Uniformity
- Low EMI Noise
- Wide Dimming
- Life Expectancy
- MVA panel: Wide Viewing Angle



Specifications

Preliminary

Model No.	SLD1975
Description	19" TFT LCD, LED Backlight 1000nits,SXGA(1280x1024)
Display Area (mm)	376.3(H) x 301 mm
Brightness	1000 cd/m ²
Resolution	1280x1024 (SXGA)
Contrast Ratio	2000: 1
Pixel Pitch (mm)	0.294(H) x 0.294(V)
Viewing Angle	+89°~-89°(H), +89°~-89°(V)
Display Colors	16.7M
Response Time (Typical)	20ms
Sync	LVDS
Power Consumption	40W
Dimensions (mm)	396x324.8x36mm
Weight (Net)	2.65kg
LED Driving Board	LID19A04
Control Board (Optional)	<input type="checkbox"/> AD5621GA <input type="checkbox"/> AD5621GD <input type="checkbox"/> AD5766GDVA <input type="checkbox"/> AD2662GDVAR
<input type="checkbox"/> AD5621GA	VGA+Audio
<input type="checkbox"/> AD5621GD	VGA+DVI
<input type="checkbox"/> AD5766GDVA	VGA+CVBS+S-Video+Audio (Optional DVI / Component)
<input type="checkbox"/> AD2662GDVAR	VGA+DVI (Optional S-Video/ Component / Audio)
F / R Control Button	<input type="checkbox"/> 5 Key <input type="checkbox"/> 4 Key
<input type="checkbox"/> 5 Key	Power Switch, Menu, Select (+,-), Auto
<input type="checkbox"/> 4 Key	Power Switch, Menu, Select (+,-),
OSD Menu	Brightness, Contrast, H/V Position, Color, Phase, Clock...
Optional	<input type="checkbox"/> AOT <input type="checkbox"/> Touch Screen

Specifications are subject to change without notice.

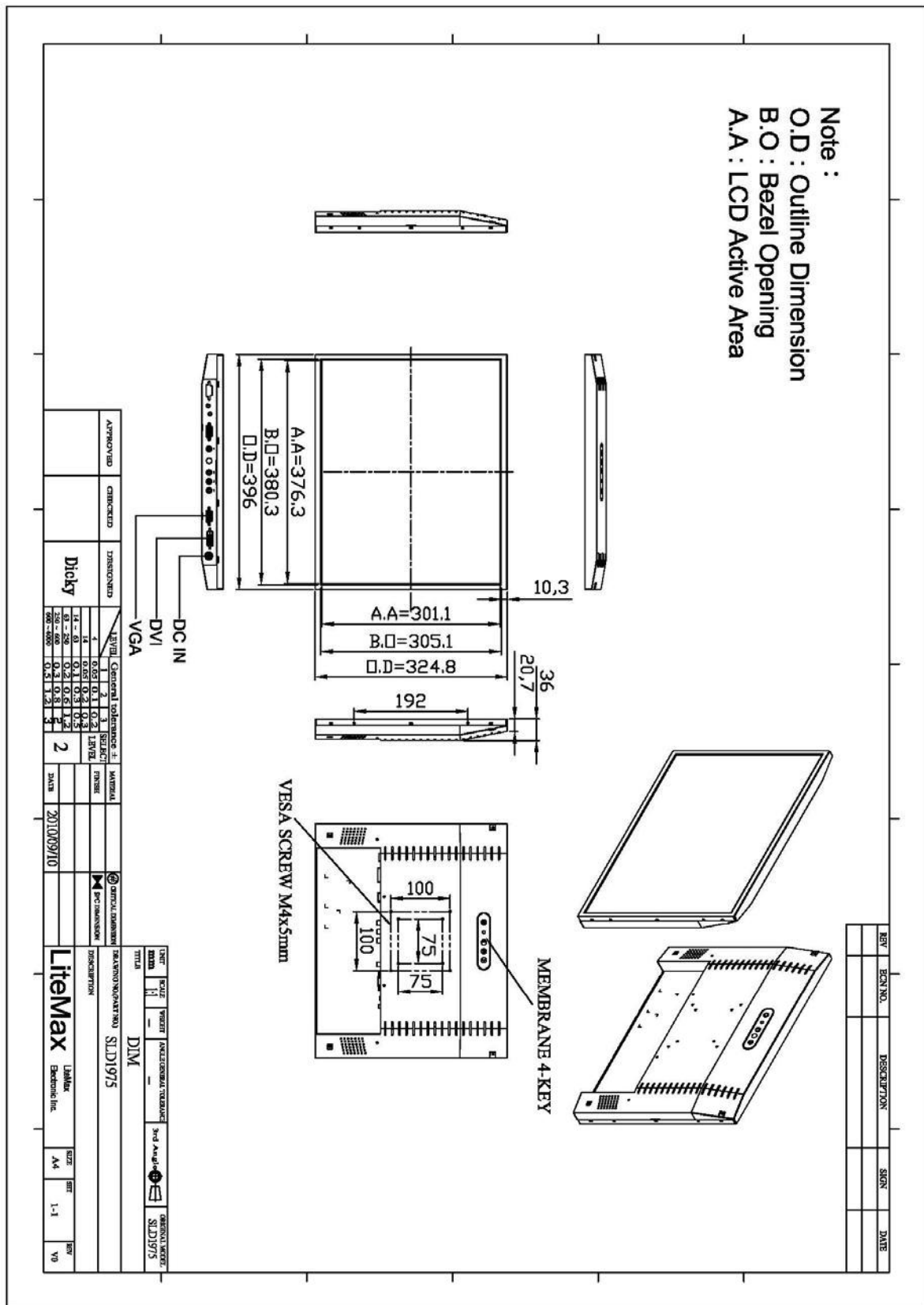
All brands or product names are trademarks or registered trademarks of their respective companies.

Mechanical Drawing



SLD 1975 Outline Dimensions

Unit: mm



Ordering Information



Part Number	Description
SLD1975-ENB-G01	19", 1000nits, SXGA, LID19, AD2662GD, O/B, V01 (2 in 1)
SLD1975-ENB-G02	19", 1000nits, SXGA, LID19, AD2662GD, O/B, V01

Optional Accessories

Part Number	Description
840612071300	ADAPTER.12V,6.66A,80W,SPU65-105,P
810618301010	CABLE.POWER.AC.1830mm USA type
810618301090	CABLE,POWER,AC,1830mm Europe type
810618301050	CABLE.POWER.AC.1830mm UK type
810618301170	CABLE.POWER,AC,1830mm Australia type
810618301030	CABLE.POWER.AC.1830mm Japan type