



## NPD2115 21.5" IP65 Sunlight Readable Marine Display

NAVPIXEL NPD2115, the high-performance, rugged touch monitor, is specially engineered to survive from the most demanding working environment. Housed in a milled billet aluminum case, the slim-profile NAVPIXEL NPD2115 is light weight and watertight. The front-mounted sunlight readable touch screen makes the industrial rugged monitor vividly and user-friendly. In addition, the high power efficiency and low heat design guarantee the stability and longevity required for mission critical deployment.

### Features:

- 1000 nits Sunlight Readable LCD
- Long Life, Low Power Consumption LED Backlight
- Wide Operating Temperature
- Picture In Picture Function
- Advanced Optical Bonding (AOT)
- High Shock & Vibration Resistance
- Resistive Touch Support
- IP65 Facial Waterproof
- 9-36V DC Input

### Application:

- Marine



## Specifications

V1

<b>Model Number</b>	<b>NPD2115</b>
<b>Description</b>	<b>21'5" IP65 Sunlight Readable Marine Display</b>
<b>Backlight</b>	LED Backlight
<b>Active Display Area</b>	476.64 x 268.11mm
<b>Brightness</b>	1000 cd/m <sup>2</sup>
<b>Resolution</b>	1920x1080 (FHD)
<b>Contrast Ratio</b>	1000:1
<b>Pixel Pitch (mm)</b>	0.248(H) x 0.248 (V)
<b>Viewing Angle</b>	170 (H), 160(V)
<b>Display Color</b>	16.7M
<b>Response Time</b>	5ms
<b>Inputs</b>	VGAx2, DVIx2, Compositex3, RS232x1, USBx1
<b>PIP Support</b>	3 Stages (child, split & wide screen)
<b>Mechanical</b>	
<b>IP Rating</b>	Facial waterproof to IP65 standards when console mounted.
<b>Construction</b>	Rugged Aluminum Alloy Chassis
<b>Mounting</b>	Panel (Flush) mount, VESA mount
<b>Dimension (mm)</b>	525.8(W)x345.2(H)x56.4(D)
<b>Net Weight</b>	7.87kg
<b>Power</b>	
<b>Voltage</b>	DC Input Voltage: DC 9~36V
<b>Power Consumption</b>	26W
<b>Environmental</b>	
<b>Operating Temperature</b>	-10°C~50°C
<b>Non-Operating Temperature</b>	-20°C~70°C
<b>Certification</b>	CE / FCC
<b>Marine Type Approval</b>	BV Rule IACES-E10 certification, comply with IEC 60945

*Specifications are subject to change without notice.*

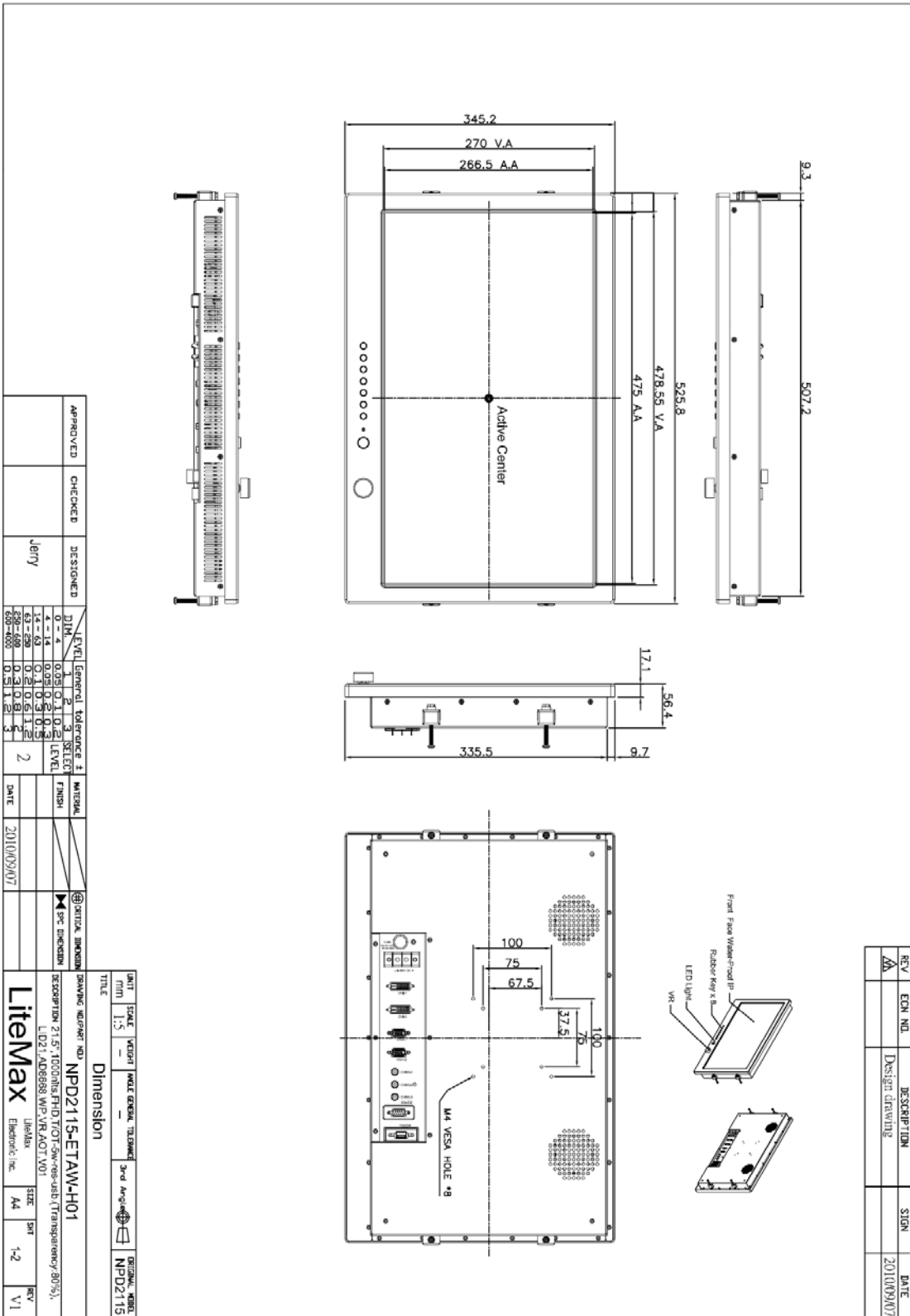
*All brands or product names are trademarks or registered trademarks of their respective companies.*



# Mechanical Drawing

## Outline Dimensions

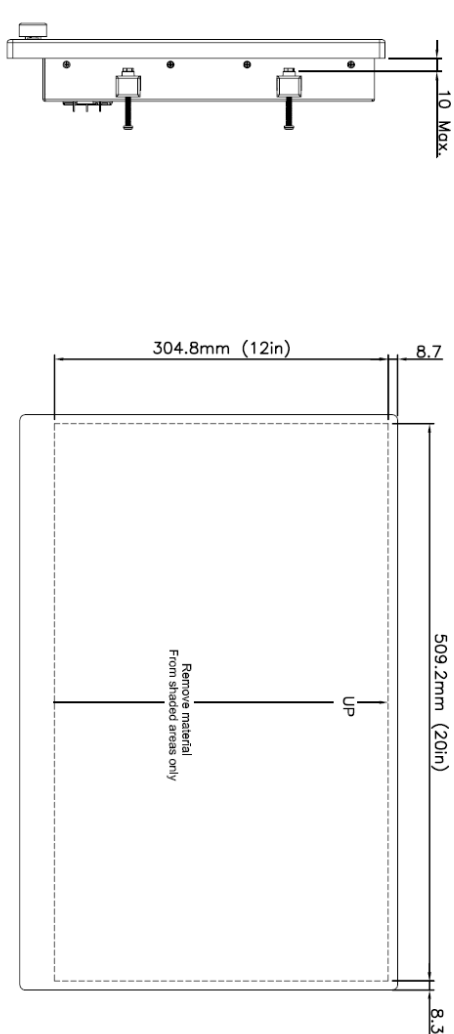
Unit:mm





REV	ECN NO.	DESCRIPTION	SIGN	DATE
A		Design drawing		2010/09/07

NPPD2115 Flush Mount Template



Side View

Back View

APPROVED	CHECKED	DESIGNED	DATE
		Jerry	2010/09/07

DIM.	LEVEL	General tolerance ±	SELECT LEVEL	MATERIAL	FINISH	OPTIONAL DIMENSION
0 - 4	1	0.05	0.1			
4 - 14	2	0.1	0.2			
14 - 50	3	0.2	0.3			
50 - 200	4	0.3	0.5			
200 - 400	5	0.5	1.0			
400 - 600	6	1.0	1.5			

UNIT	SCALE	WEIGHT	MADE GENERAL TOLERANCE	3rd Angle	ORIGINAL NAME
MM	1:5				NPPD2115

TITLE	DESCRIPTION	SIZE	SHT	REV
<b>Draving NPPD2115</b>	<b>NPPD2115-ETAW-H01</b>	A4	2-2	V1

DESCRIPTION	DATE
DESCRIPTION 21.5" 1000dots FHD T/OT 5w-res-usb (Transparency:80%), L1D21.AD8688.WP.VR.AOT.V01	



## Ordering Information

Part Number	Description
NPD2115-EGAW-H01	21.5",1000nits,FHD,AR Glass,LID21,AD8668,WP,VR,AOT,V01
NPD2115-EGAW-H011	21.5",1000nits,FHD,AR Glass,LID21,AD8668,WP,VR,AOT,with adaptor,V01
NPD2115-ETAW-H01	21.5",1000nits,FHD,T/OT-5w-res-usb.(Transparency:80%),LID21.AD8668,WP,VR,AOT,V01
NPD2115-ETAW-H011	21.5",1000nits,FHD,T/OT-5w-res-usb.(Transparency:80%),LID21.AD8668,WP,VR,AOT,with adaptor,V01

## Optional Accessories

Part Number	Description
980000300010	SET,OTHER,CD for User.Menu&Touch driver(NPD series)
810650005110	CABLE,POWER,DC,5000mm,TER.MINAL TO OPEN,14AWG*2C+BRA.ID,COOL GRAY 7C PVC JACKET,P
810130001000	CABLE.VGA.3000mm.D-SUB15P MALE.BLUE TO D-SUB 15P MALE BLUE.BLACK.P
321189155501	Print,Menu,User,NPD.1555,V0,series,P
321179211501	Print,Menu,Install,NPD,2115,V0.Flush mount template,P
112615315401 x (4)	Metal,SPCC,NPS,1531,Lock,V0,P
214032121101 x (4)	Screw,M4,32mm,Round,Ni,P
460100002101 x (4)	Fixture,other,MP-4,V0,P
980000560010 (Optional)	SET,OTHER,ADAPTER REWORK.60W KPA-060F WITH Y TYPE.TERMINAL,P
810618301010 (Optional)	CABLE.POWER.AC.1830mm USA type
810618301090 (Optional)	CABLE.POWER.AC,1830mm Europe type
810618301050 (Optional)	CABLE.POWER.AC.1830mm UK type
810618301170 (Optional)	CABLE.POWER.AC,1830mm Australia type
810618301030 (Optional)	CABLE.POWER.AC.1830mm Japan type