



# NPD1569

## 15.6" FHD IP65 Sunlight Readable Multi-Touch Marine Display

NAVPIXEL NPD1569, the high-performance, rugged touch monitor, is specially engineered to survive from the most demanding working environment. Housed in a milled billet aluminum case, the slim-profile NAVPIXEL NPD1569 is light weight and watertight. The front-mounted sunlight readable touch screen makes the industrial rugged monitor vividly and user-friendly. In addition, the high power efficiency and low heat design guarantee the stability and longevity required for mission critical deployment.

**Features:**

- 1800 nits Sunlight Readable LCD
- Long Life, Low Power Consumption LED Backlight
- Rotary and push knob (OSD MENU)
- Wide Operating Temperature
- Advanced Optical Bonding (AOT)
- High Shock & Vibration Resistance
- Projected Capacitive Multi-Touch Support
- Full Flat Design
- IP65 Facial Waterproof
- Isolation Power 9-36V DC Input



**Application:**

- Marine

Specifications		V1
<b>Model Number</b>	NPD1569	
<b>Description</b>	15.6" FHD IP65 Sunlight Readable Multi-Touch Marine Display	
<b>Backlight</b>	LED Backlight	
<b>Active Display Area</b>	344.16 x 193.59mm	
<b>Brightness</b>	1800 cd/m <sup>2</sup>	
<b>Resolution</b>	1920x1080 (FHD)	
<b>Aspect ratio</b>	16 : 9	
<b>Contrast Ratio</b>	1200:1	
<b>Pixel Pitch (mm)</b>	0.17925(H) x 0.17925(V)	
<b>Pixel per inch (PPI)</b>	141	
<b>Viewing Angle</b>	170°(H),170°(V)	
<b>Display Color</b>	16.2M	
<b>Response Time</b>	25ms	
<b>Inputs</b>	VGAx1, DVI-Dx1, HDMIx1, DPx1, Compositex1, RS232x1, USBx1	
<b>Mechanical</b>		
<b>IP Rating</b>	Facial waterproof to IP65 standards when console mounted.	
<b>Construction</b>	Rugged SPCC Chassis	
<b>Mounting</b>	Panel (Flush) mount, VESA mount	
<b>Dimension (mm)</b>	393.9(W)x285(H)x61.2(D)	
<b>Net Weight</b>	5.2Kg	
<b>Power</b>		
<b>Voltage</b>	DC Input Voltage: DC 9~36V	
<b>Power Consumption</b>	32W	
<b>Environmental</b>		
<b>Operating Temperature</b>	-30°C~80°C	
<b>Non-Operating Temperature</b>	-30°C~85°C	
<b>Certification</b>	Designed to meet CE / FCC Class A	
<b>Marine Type Approval</b>		

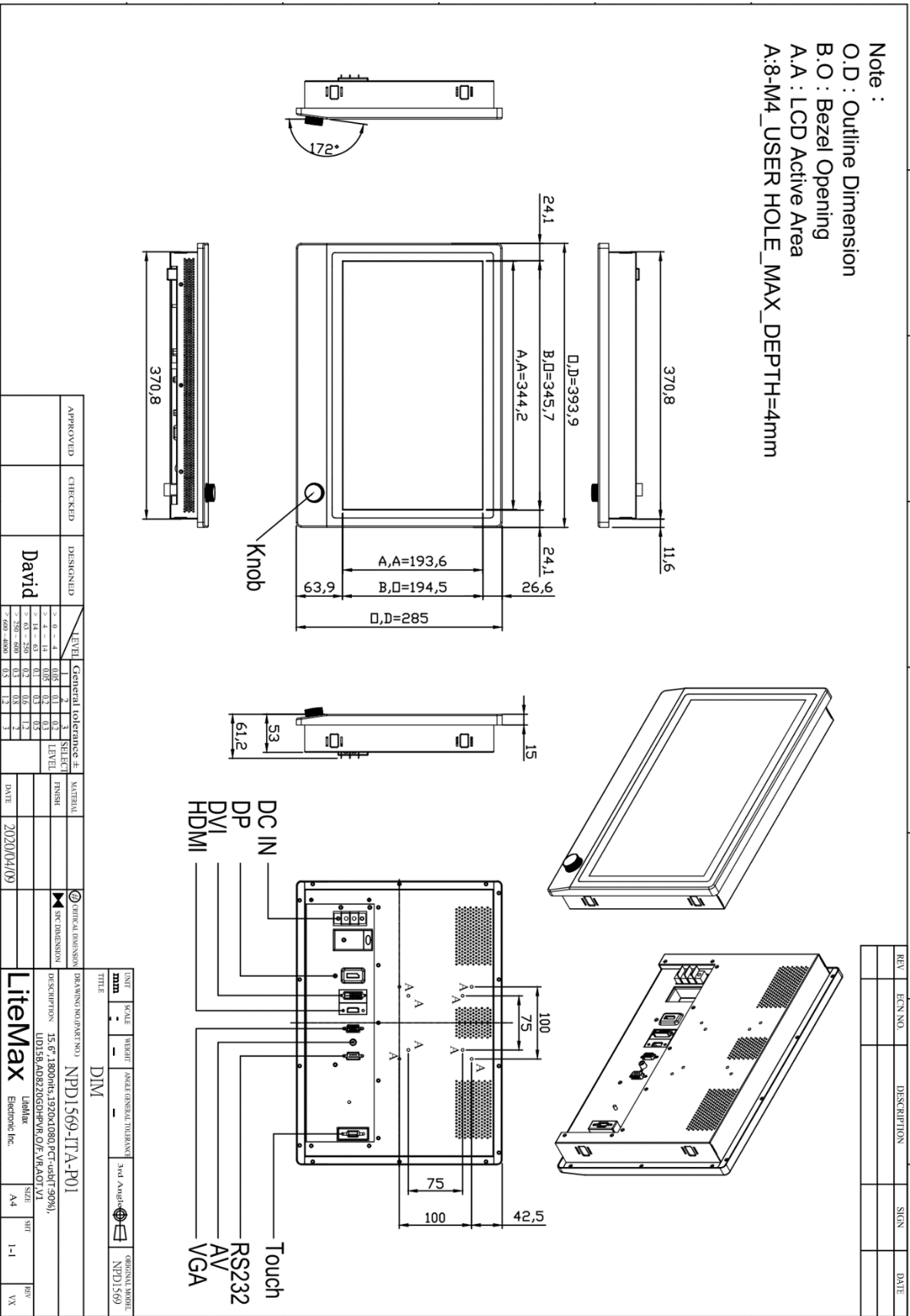
*Specifications are subject to change without notice.  
All brands or product names are trademarks or registered trademarks of their respective companies.*



# Mechanical Drawing

## Outline Dimensions

Unit:mm



REV	ECN NO.	DESCRIPTION	SIGN.	DATE

APPROVED	CHECKED	DESIGNED	LEVEL	General tolerance ±	SELECT	MATERIAL	DATE
		David	1	±0,1	1		2020/04/09
			2	±0,05	2		
			3	±0,02	3		
			4	±0,01	4		
			5	±0,005	5		

DATE	SCALE	WEIGHT	ANGLE/GENERAL TOLERANCE	3rd Angle	ORIGINAL MODEL
					NPD1569

**TITLE**  
 DIM

**DRAWING NO. (PART NO.)**  
 NPD1569-TTA-P01

**DESCRIPTION**  
 15.6" 1800x15.1920x1080 PCT-usBT 90%,  
 I/O:15.6.A082Z0G0HVR.G/F.VR.A0T.V1

**Author**  
 Litemax Electronic Inc.

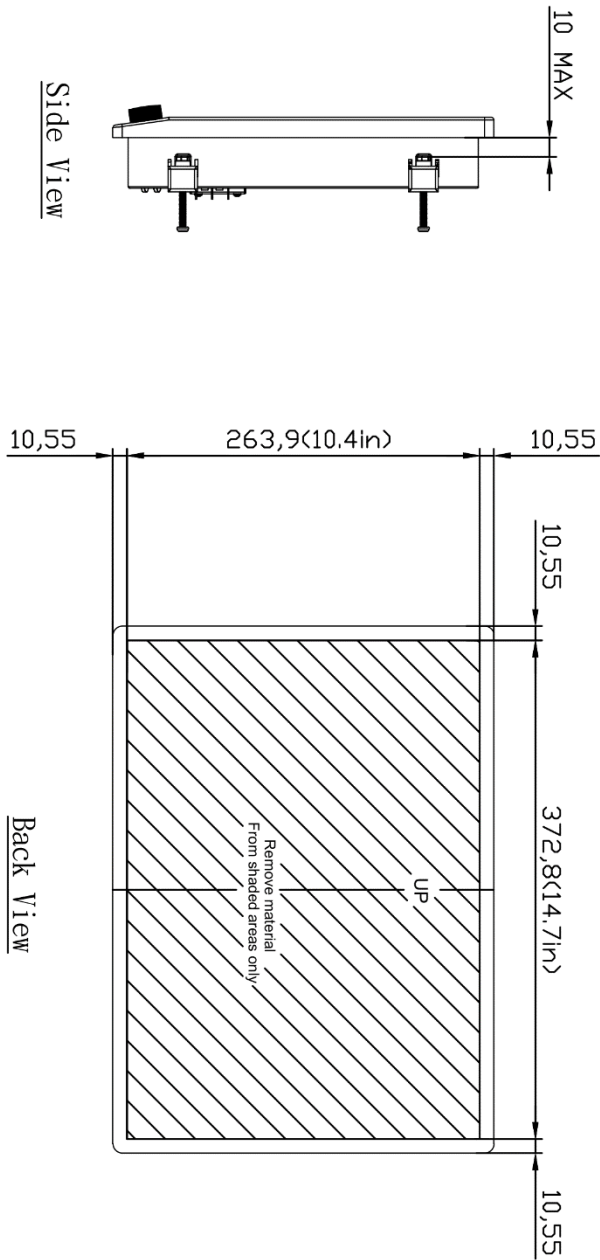
**SIZE**  
 A4

**SHEET**  
 1-1

**REV**  
 VX



REV	ECN NO.	DESCRIPTION	SIGN	DATE



APPROVED	CHECKED	DESIGNED	LEVEL	General tolerance ±	SHEET	MATERIAL	DATE	CIRCUIT DIMENSION	DRIVING NO (PART NO.)	UNIT	SCALE	VELOCITY	ANGLE GENERAL TOLERANCE	3rd Angle	ORIGINAL MARK
		David	> 0 - 4	0,05	1		2020/04/09		NPD1569-ITTA-P01	mm	1:1		3rd Angle	NPD1569	
			> 4 - 14	0,05	2										
			> 14 - 250	0,2	3										
			> 250 - 600	0,3											
			> 600 - 1000	0,5											

DESCRIPTION	SIZE	SHEET	REV
15.6" 1800rHz, 1920x1080 PCT-usBT-90%, UID158_A08220G0HPVR_O/E_VR_A0T_V1	A4	1-1	VX

**LiteMax** Electronic Inc.



**Ordering Information**

Part Number	Description
NPD1569-ITA-P01	15.6",1800nits,1920x1080,PCT-usb(T:90%),LID15B,AD8220GDHPVR,O/F,VR,AOT,V1

**Optional Accessories**

Part Number	Description
112615315401 x (4)	Metal,SPCC,NPS,1531,Lock,V0,P
214032121101 x (4)	Screw,M4,32mm,Round,Ni,P
460100002101 x (4)	Fixture,other,MP-4,V0,P
980000560010 (Optional)	SET,OTHER,ADAPTER REWORK.60W KPA-060F WITH Y TYPE.TERMINAL,P
810618301010 (Optional)	CABLE.POWER.AC.1830mm USA type
810618301090 (Optional)	CABLE.POWER.AC,1830mm Europe type
810618301050 (Optional)	CABLE.POWER.AC.1830mm UK type
810618301170 (Optional)	CABLE.POWER.AC,1830mm Australia type
810618301030 (Optional)	CABLE.POWER.AC.1830mm Japan type