

NPD1568

15" IP65 Sunlight Readable Multi-Touch Marine Display

NAVPIXEL NPD1568, the high-performance, rugged touch monitor, is specially engineered to survive from the most demanding working environment. Housed in a milled billet aluminum case, the slim-profile NAVPIXEL NPD1568 is light weight and watertight. The front-mounted sunlight readable touch screen makes the industrial rugged monitor vividly and user-friendly. In addition, the high power efficiency and low heat design guarantee the stability and longevity required for mission critical deployment.

Features:

- 1600 nits Sunlight Readable LCD
- Long Life, Low Power Consumption LED Backlight
- Wide Operating Temperature
- Advanced Optical Bonding (AOT)
- High Shock & Vibration Resistance
- Projected Capacitive Multi-Touch Support
- IP65 Facial Waterproof
- Isolation Power 9-36V DC Input

Application:

- Marine



Specifications

V1

Model Number	NPD1568
Description	15" IP65 Sunlight Readable Multi-Touch Marine Display
Backlight	LED Backlight
Active Display Area	304.13 x 228.1mm
Brightness	1600 cd/m ²
Resolution	1024x768(XGA)
Contrast Ratio	700:1
Pixel Pitch (mm)	0.297(H) x 0.297 (V)
Viewing Angle	160 (H), 160(V)
Display Color	16.7M
Response Time	8ms
Inputs	VGAX1, DVIx1, Compositex3, RS232x1, USBx1
PIP Support	NA
Mechanical	
IP Rating	Facial waterproof to IP65 standards when console mounted.
Construction	Rugged Aluminum Alloy Chassis
Mounting	Panel (Flush) mount, VESA mount
Dimension (mm)	389.4(W) x 331(H) x 57.1(D)
Net Weight	4.1Kg
Power	
Voltage	DC Input Voltage: DC 9~36V
Power Consumption	23W
Environmental	
Operating Temperature	-20°C~60°C
Non-Operating Temperature	-20°C~70°C
Certification	Designed to meet CE / FCC Class A
Marine Type Approval	Designed to meet CE/FCC & BV Marine Approval Pending

Specifications are subject to change without notice.

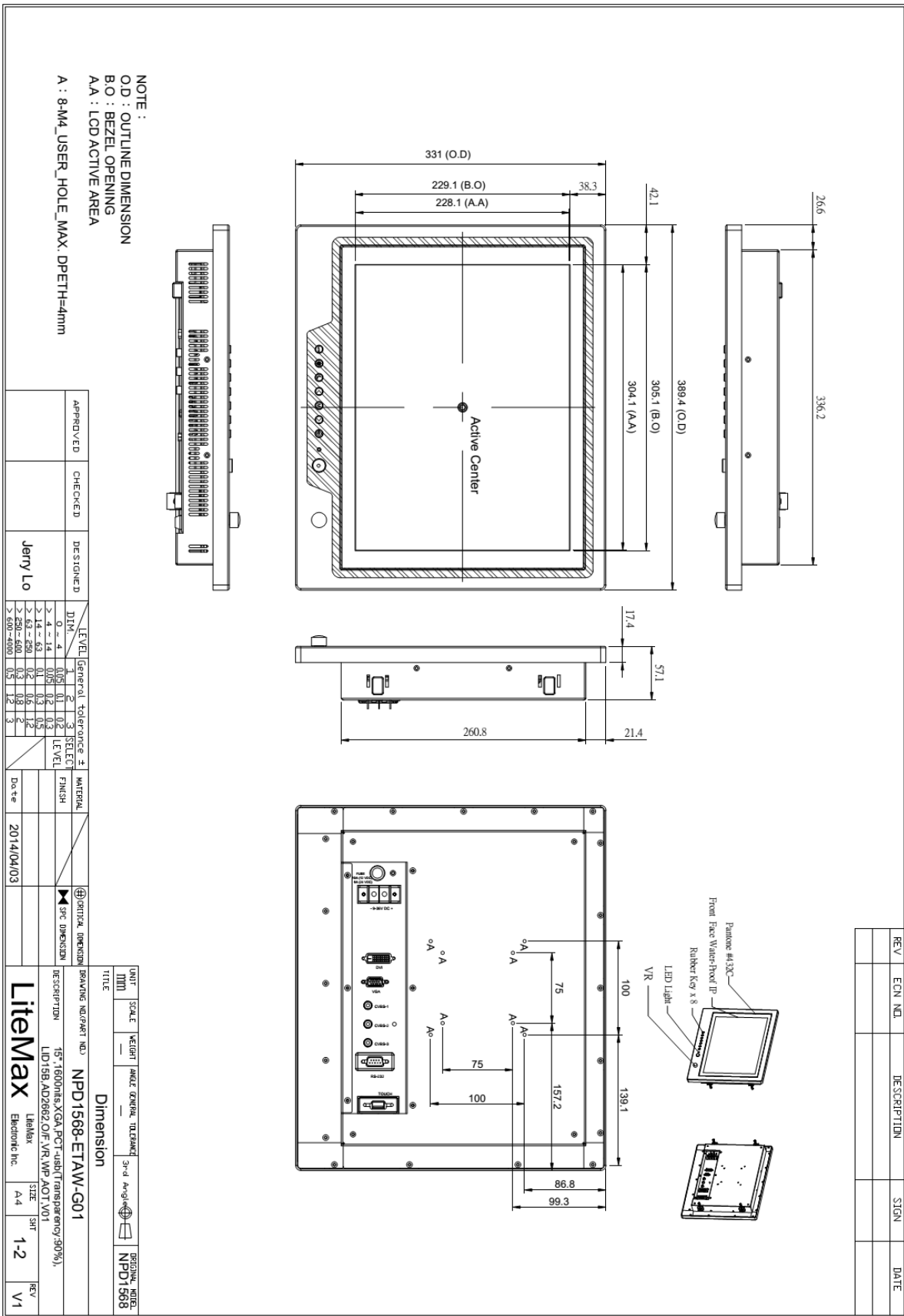
All brands or product names are trademarks or registered trademarks of their respective companies.



Mechanical Drawing

Outline Dimensions

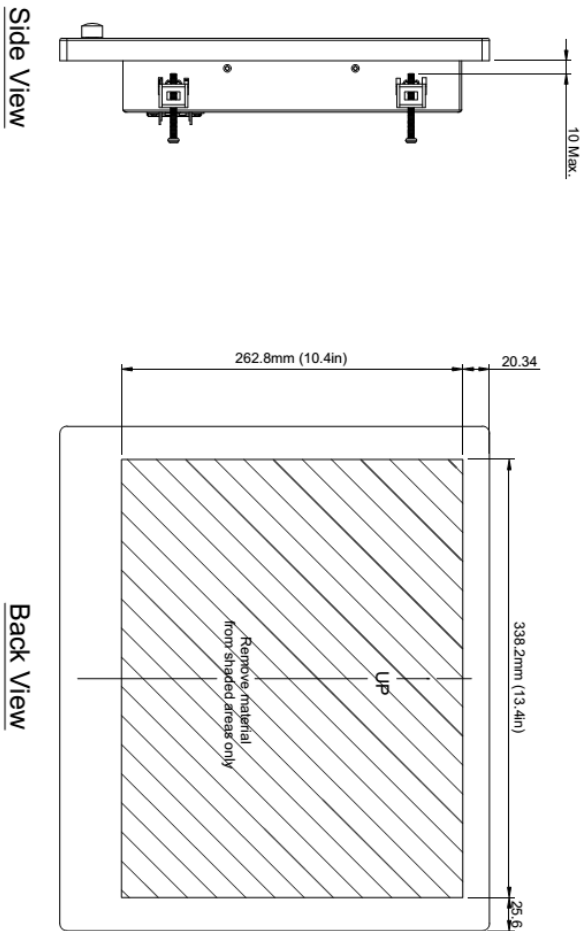
Unit:mm





REV	ECN NO.	DESCRIPTION	SIGN	DATE

NPD1568 Flush Mount Template



APPROVED	CHECKED	DESIGNED	LEVEL	General tolerance	±	SELECT	MATERIAL	FINISH	DATE	OPTICAL DIMENSION	DRIVING MOUNT NO.	TITLE	UNIT	SCALE	WEIGHT	ANGLE	GENERAL TOLERANCE	3rd Ang	DRIVING MOUNT NO.					
		Jerry Lo	DIM	0 - 4	0.1	1					NPD1568-ETAW-G01	Dimension	MM							NPD1568				
			> 4 - 14	0.05	0.1	2																		
			> 14 - 63	0.1	0.3	0.5																		
			> 63 - 250	0.2	0.6	1.2																		
			> 250 - 600	0.3	0.8	2																		
			> 600 - 1000	0.5	1.2	3																		



Ordering Information

Part Number	Description
NPD1568-ETAW-G01	15",1600nits,XGA,PCT-usb(Transparency:90%),LID15B,AD2662GDV3R,O/F,VR,WP,AOT,V1

Optional Accessories

Part Number	Description
980000300010	SET,OTHER,CD for User. Menu & Touch driver(NPD series)
810650005110	CABLE,POWER,DC,5000mm,TER.MINAL TO OPEN,14AWG*2C+BRA.ID,COOL GRAY 7C PVC JACKET,P
810130001000	CABLE.VGA.3000mm.D-SUB15P MALE.BLUE TO D-SUB 15P MALE BLUE.BLACK.P
321189156801	Print,Menu,User,NPD.1568,V0,series,P
321179156801	Print,Meun,Install,NPD,1568,V0.Flush mount template,P
112615315401 x (4)	Metal,SPCC,NPS,1531,Lock,V0,P
214032121101 x (4)	Screw,M4,32mm,Round,Ni,P
460100002101 x (4)	Fixture,other,MP-4,V0,P
980000560010 (Optional)	SET,OTHER,ADAPTER REWORK.60W KPA-060F WITH Y TYPE.TERMINAL,P
810618301010 (Optional)	CABLE.POWER.AC.1830mm USA type
810618301090 (Optional)	CABLE,POWER,AC,1830mm Europe type
810618301050 (Optional)	CABLE.POWER.AC.1830mm UK type
810618301170 (Optional)	CABLE.POWER,AC,1830mm Australia type
810618301030 (Optional)	CABLE.POWER.AC.1830mm Japan type