



**product description**

19", 1600Nits, PCT, Intel Core i5-4570TE, DDR3 SODIMM/4GB, SSD/64GB, RJ45\*2, USB-3\*2, USB-2\*4, COM\*2, DVI\*1, VGA\*1, Audio Jack\*2(Mic-in,Line-out), PS2\*1(KB&Mouse), AOT, WP, AC100~240V input

**Introduction**

**Features:**

- 1600 nits Sunlight Readable LCD
- Long Life, Low Power Consumption LED Backlight
- Advanced Optical Bonding (AOT)
- High Shock & Vibration Resistance
- PCT Multi-Touch Support
- IP65 Fascial Waterproof

**Application:**

- Marine
- Outdoor Display



**Specifications** Preliminary

<b>Model Number</b>	<b>NPS1968</b>
<b>LCD Display</b>	
<b>Backlight</b>	19" LED Backlight
<b>Active Display Area</b>	377.32x302.06 mm
<b>Brightness</b>	1600 cd/m <sup>2</sup>
<b>Resolution</b>	1280x1024 (SXGA)
<b>Contrast Ratio</b>	1000:1
<b>Touch Screen</b>	PCT Multi-Touch
<b>Optical</b>	AOT
<b>System</b>	
<b>Processor</b>	Intel Core i5
<b>Chip Set</b>	Intel H81 Express Chipset
<b>Memory</b>	DDR III SODIMM 4GB
<b>Ethernet</b>	Realtek 8111F PCIe Gigabit LAN
<b>Storage</b>	SATA 2.5" HDD (Optional)
<b>I/O Port</b>	RJ45*2,USB-3*2,USB-2*4,COM*2,DVI*1,VGA*1, Audio Jack*2(Mic-in,Line-out),PS2*1(KB&Mouse),Power AC-in x1
<b>BIOS</b>	AMI
<b>Wake on LAN</b>	Yes
<b>Watchdog Timer</b>	1~255 steps programmable
<b>H/W Status Monitor</b>	Support power supply voltages, fan speed and temperature monitoring
<b>Expansion Interface</b>	Mini PCIe (internal)
<b>Power</b>	
<b>Voltage</b>	AC Input: AC 100 ~ 240V ; DC Input (Optional)
<b>Power consumption</b>	90W
<b>Mechanical</b>	
<b>IP Rating</b>	Fascial waterproof to IP65 standards when console mounted.
<b>Construction</b>	Aluminum Alloy Chassis
<b>Mounting</b>	Panel (Flush) Mount , VESA75/VESA100, Stand Mount
<b>Dimension</b>	469.5mm (W) x 427.35mm(H) x 92.2mm(D)
<b>Net Weight</b>	5.5kg
<b>Environmental</b>	
<b>Operating Temperature</b>	0°C~50°C
<b>Storage Temperature</b>	-20°C ~ 60°C
<b>Operating Humidity</b>	5~95% @ 40°C, non-condensing
<b>Certification</b>	Designed to meet CE/FCC

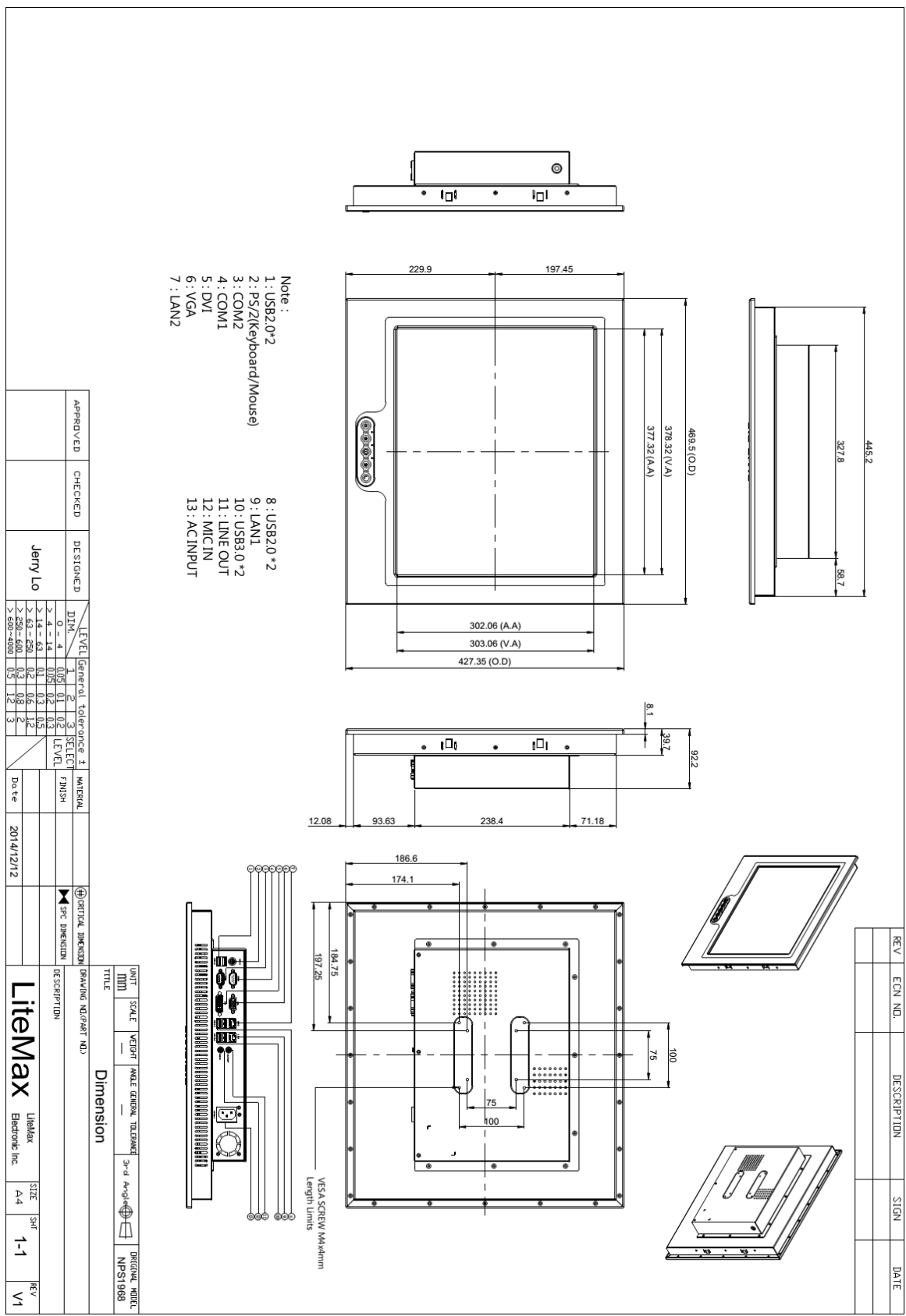
*Specifications are subject to change without notice.  
All brands or product names are trademarks or registered trademarks of their respective companies.*



# Mechanical Drawing

## Outline Dimensions

Unit : mm



APPROVED	CHECKED	DESIGNED	DATE
		Jerry Lo	2014/12/12

LEVEL	General Tolerance	SELECT LEVEL	MATERIAL	FINISH
0	±0.15	0.1		
1	±0.2	0.2		
2	±0.3	0.3		
3	±0.4	0.4		
4	±0.5	0.5		
5	±0.6	0.6		
6	±0.7	0.7		
7	±0.8	0.8		
8	±0.9	0.9		
9	±1.0	1.0		
10	±1.2	1.2		
11	±1.5	1.5		
12	±2.0	2.0		
13	±2.5	2.5		

TITLE	UNIT	SCALE	WEIGHT	MADE	GENERAL TOLERANCE	3rd Angle	PROJECTION	ORIGINAL NUMBER
Dimension	mm	1:1						NPS1968

REV	ECN NO.	DESCRIPTION	SIGN	DATE



**Ordering Information**

Part Number	Description
NPS1968-ETA-A01	19",1600nits,PCT,Intel Core i5-4570TE,DDR3 SODIMM/4GB,SSD/64GB,RJ45*2,USB-3*2,USB-2*4,COM*2,VGA*1,Audio Jack*2,PS2*1,LS,AOT,WP,AC100~240V

**Optional Accessories**

Part Number	Description
321038156800	Print,Label,Serial,NPS,1568.V0.Microsoft Windows 7.Professional for Embedded. Systems,42C-00022,P
810618301010	CABLE.POWER.AC.1830mm USA type
810618301090	CABLE.POWER.AC,1830mm Europe type
810618301050	CABLE.POWER.AC.1830mm UK type
810618301170	CABLE.POWER.AC,1830mm Australia type
810618301031	CABLE.POWER.AC.1830mm Japan type