



iCAM-ZMR8422X

Auto Focus IR Bullet IP Camera
2MP, IP67



Features

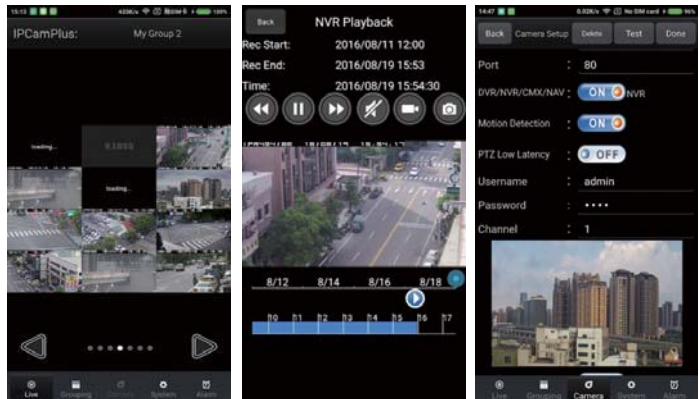
- Full HD 2 megapixel CMOS image sensor
- 1080P True H.264 AVC High Profile video compression
- H.264 and Motion JPEG multi-profile video streaming
- Auto focus with zoom / focus motorized lens
- Smart H.264 supported
- 3D noise reduction (MCTF)
- 2D WDR function
- HDR function up to 100dB
- Digital PTZ supported
- IVS supported
- Tampering / Motion detection alarm function
- High efficiency IR LED, radiant distance up to 30m
- Day & Night (IR cut removable)
- Cable managed housing and bracket
- ONVIF Profile S supported
- IP67 rain and dust resistant

Introduction

iCAM-ZMR8422X is a 2MP auto-focused vandal resistant bullet IR IP camera designed into a range of environments such as retail, home, office, residential premises and hotel security. It features a full HD 2.0 megapixel CMOS image sensor. The camera has built-in IR-cut filter which allows clearer images at day and night operations even in the low lux condition. The high efficiency IR LED radiant distance can extend up to 30m. Its auto focus feature allows users to automatically focus the camera from a distant location. With motorized lens, all you need to do with zoom/focus adjustments is simply a click on browsers. Supported with privacy mask, 3D noise reduction, 2D WDR function, and HDR function up to 100dB, it ensures to deliver a clear and detailed image to the users.

Android/iOS Mobile APP: IPCamPlus

provide smart phone APP for Android and iOS platform. Apps allow you to catch the firsthand notifications and to take over all event situations in real-time. Furthermore, using the App can also allow you to reward the recorded video remotely. While the alarm is triggered, App will send a notification message to the user immediately.



Dimensions: 68(W) × 69(H) × 214(D) mm

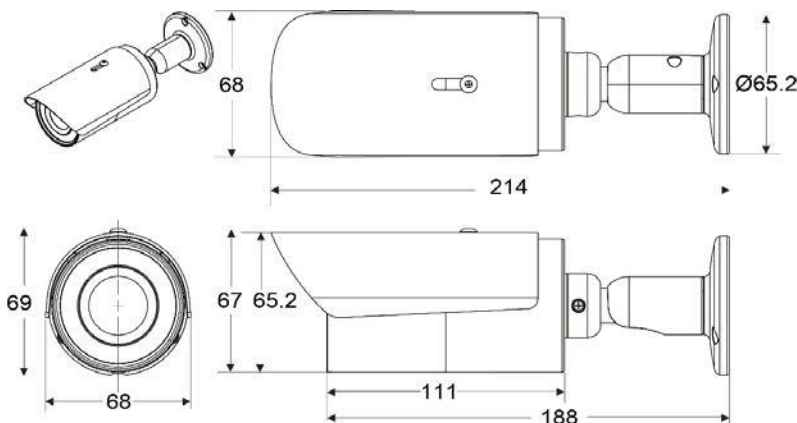
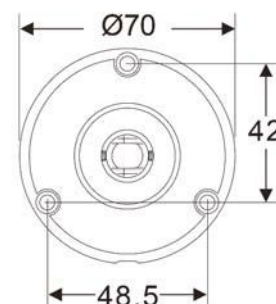


Diagram of mounting holes: (unit in mm)



■ Specifications

| Model | iCAM-ZMR8422X |
|---|---|
| Video Performance | |
| Min. Illumination | Color : 0.02 Lux at F1.6 ; B/W : 0.005 Lux at F1.6 ; 0 Lux with IR LED ON |
| Lens / Night vision (infrared LED) | |
| Focal Length | 2.8 – 8 mm (zoom / focus motorized) |
| Iris | F1.6 |
| Angle of View | 102.3° (W) – 51.6° (T) (H) 51.3° (W) – 24.9° (T) (V) 128.2° (W) – 57.3° (T) (D) |
| Peak Wavelength | 850nm |
| Beam Spread | 60° |
| Radiant Distance | 30M |
| Sensor | |
| Pick Up Element | 1/2.8" CMOS image sensor |
| Effective Pixels | 1945 (H) × 1097 (V) = 2,133,665 (pixels) |
| Video Streaming | |
| Video Compression | H.264 main and high profile, Motion JPEG |
| Video Streaming | RTP/HTTP, RTP/TCP, RTP/UDP, Multicast |
| Number of streams | 4 |
| Video Bitrate | 128Kbps – 12Mbps; Frame rate and bit rate controllable on-the-fly; VBR / CBR / GOP supported, Fixed bitrate, Smart H.264 |
| Network Security | |
| Encryption | Base64 HTTP encryption, HTTPS encryption |
| Authentication | Digest HTTP authentication, RTSP authentication |
| Address Filter | IP address filter, MAC address filter |
| Access | Multiple user access levels with password protection |
| Users | 10 simultaneous users |
| Multi IP address | Yes |
| Video Resolutions (H x V) | |
| Resolution | 2MP(1920 × 1080), 1.3MP(1280 × 960), 1MP(1280 × 720), D1(720 × 480, 720 × 576), VGA(640 × 480), CIF(352 × 240) |
| Maximum Frame Rate | H.264 / MJPEG : up to 30 fps @ 1920 × 1080 |
| Network | |
| Ethernet | 10/100 Mbps Base-T, RJ-45 |
| ePTZ & Digital Zoom | Yes, ROI (Region of Interest) |
| OSD | Text overlay for date, time, and camera name |
| CPU, Memory | Embedded SoC ARM Cortex-A9, 600MHz, 256MB DDR3, 256MB flash memory |
| OS | Embedded Linux 3.10 |
| Network Protocols | IPv4, IPv6, TCP, UDP, HTTP, HTTPS, SMTP, MQTT, QoS, SNMP, SNMP Trap, NTP, DDNS, UPnP, FTP, ARP, DHCP, PPPoE, DNS, RTSP, RTP, Telnet, ICMP, IGMP, ONVIF Profile S, SDDP, Bonjour |
| User accounts | 10 user accounts available |
| Video Display | Universal ActiveX & HTML5 |

| Model | iCAM-ZMR8422X |
|---------------------------------|---|
| Video Functions | |
| Scanning System | Progressive Scan |
| Infrared Cut Filter | Auto / Day (Color) / Night (Mono) / Schedule |
| White Balance | Auto / Tungsten / Indoor / Fluorescents1 / Fluorescents2 / Outdoor1 / Custom |
| Electrical Shutter | 1/30(1/25)s – 1/30000s |
| Sense Up | Off / 1 Frame / 2 Frames |
| Sense Up+ | Yes |
| Auto Gain Control | 66 dB Variable Gain |
| S/N Ratio | More than 50dB (AGC off) |
| 3D Noise Reduction | Off / 1 – 32 Selectable |
| 2D WDR | Off / Auto / x2 / x3 / x4 (by normal mode) |
| High Dynamic Range | Up to 100dB (by HDR mode, 2 shutter line interleave) |
| Privacy Masking | Off / On (4 zones) |
| Image Effects | Brightness, Contrast, Hue, Saturation, Sharpness, Mirror, Flip, Lens Distortion Correction |
| Auto Focus | One Push |
| Integration | |
| Mobile Application | Integrated to mobile app (IPCamPlus), iPhone, iPad, Android support |
| Video Management | ONVIF Profile S, Navigator Enterprise 2.0, Third party VMS through HTTP API |
| SD Card Recording | Support Micro SD/SDHC/SDXC card for circular recording (card is not included) |
| Maintenance | Firmware update via HTTP and IP Scan; Firmware available at web site |
| IVS Basic | Motion Detection, Tampering Detection, Advanced Motion Detection, Tripwire, Traffic Light Detection, Object Counting |
| Event Triggers Event actions | Motion / Tamper / Network lost detection FTP / SMTP / HTTP post / SD card / SAMBA / SMTP Trap |
| Languages | English, Traditional Chinese, Simplified Chinese, Spanish, Italian, Turkish, Russian, Korean, French, Arabic, Hungarian, Japanese |
| Normal | |
| Power Supply | DC12V ±10% / PoE (IEEE 802.3af compliant) |
| Consumption | DC12V, 7.5W / PoE, 8.6W |
| Dimension | 68(W) × 69(H) × 214(D) mm |
| Weight | 515g |
| Window | Ø58 Heat Resistant Glass |
| Certifications | CE, FCC(EMI CLASS B) |
| IP Rating Vandal Resistant | IP67 |
| Temperature | Starting: -10°C – +50°C (14°F – 122°F) Operating: -40°C – +50°C (-40°F – 122°F) Storage : -25°C – +60°C (-13°F – 140°F) |
| Humidity | 10% – 90% RH |
| PC Requirements | |
| CPU | Intel® Core™ i3 or higher grade |
| OS | Windows 7 or above |
| RAM | 4GB or above, Dedicated Graphics Card |
| Web browser | Microsoft® Internet Explorer® 9 or above |

■ Ordering Information

| | |
|----------------------|---|
| iCAM-ZMR8422X | Auto Focus IR Bullet IP Camera, with 2MP and IP67 Resistant |
|----------------------|---|